



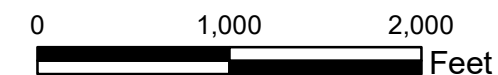
**Master Trail Plan  
(Last Updated 1/2025)**

- Existing "CE" Multimodal Trail
- Existing Paved Multimodal Trail
- Existing Sidewalks & Bike Lanes
- Proposed TAP Grant Concrete Multimodal Trail
- Future Paved Trail
- Future Bike Lanes
- Cedars Historic Overlook
- Future Scenic Overlook

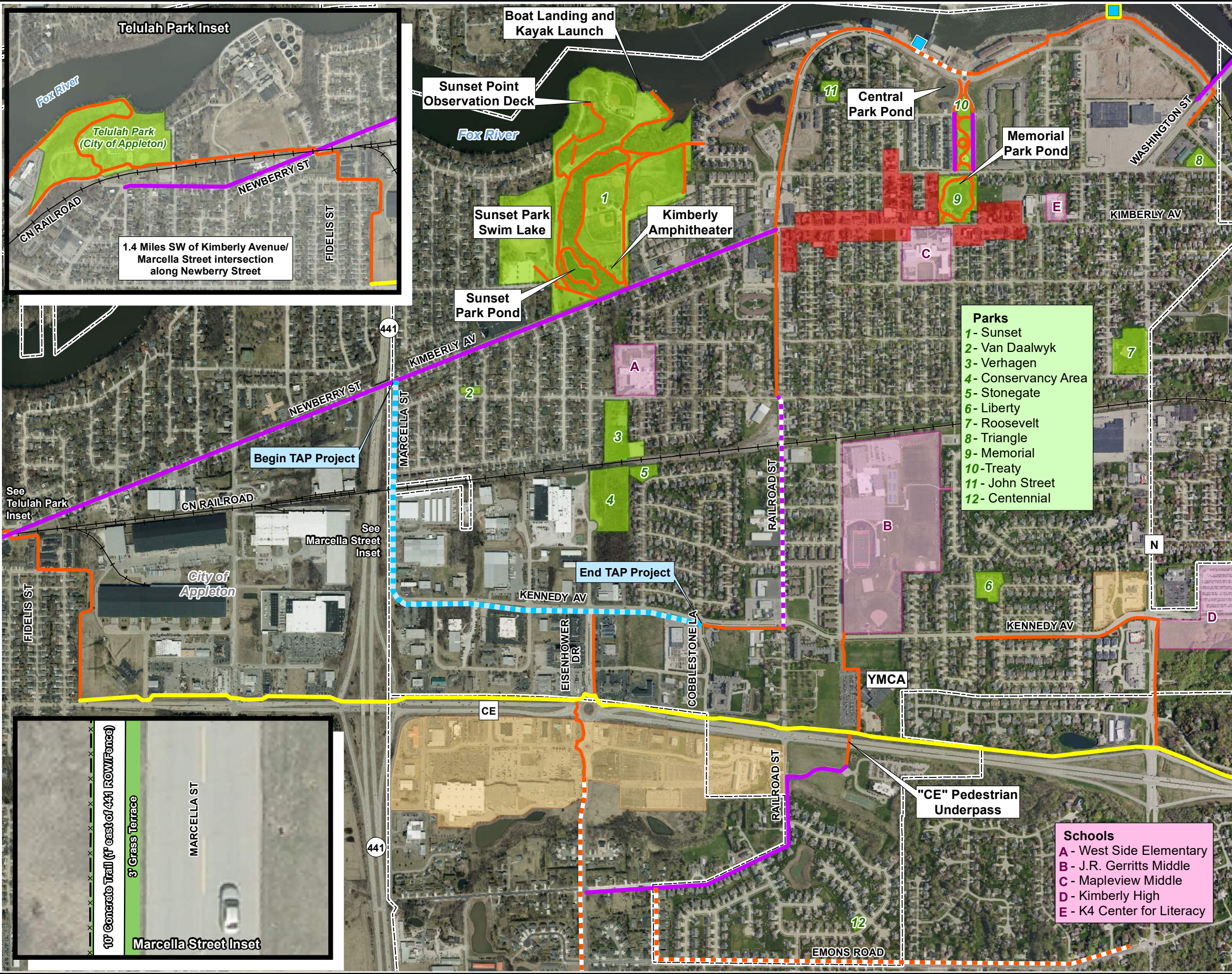
**Other Mapped Features**

- Downtown Business District
- Essential Commercial Services
- School
- Park
- Municipal Boundary
- Railroad Centerline

Source: Outagamie County, 2023-24.



**MASTER TRAIL PLAN  
VILLAGE OF KIMBERLY  
OUTAGAMIE COUNTY, WISCONSIN**



- Parks**
- 1 - Sunset
  - 2 - Van Daalwyk
  - 3 - Verhagen
  - 4 - Conservancy Area
  - 5 - Stonegate
  - 6 - Liberty
  - 7 - Roosevelt
  - 8 - Triangle
  - 9 - Memorial
  - 10 - Treaty
  - 11 - John Street
  - 12 - Centennial

- Schools**
- A - West Side Elementary
  - B - J.R. Gerritts Middle
  - C - Mapleview Middle
  - D - Kimberly High
  - E - K4 Center for Literacy



m:\GIS\Projects\K0001\_Village\_Kimberly\MasterTrailPlan\_B.mxd January 14, 2025 kpk